



MOBILE / CELLULAR MAST & TOWER SOLUTIONS



WILL-BURT

www.willburt.com

ISO 9001:2008 CERTIFIED COMPANY

COW SERIES • CLT SERIES • EXPEDITION SERIES • HURRY-UP MAST • IT SERIES • MT SERIES • NC/SR SERIES
PNEUMATIC LOCKING MAST • PNEUMATIC NON-LOCKING MAST • SC SERIES • SR SERIES • TMT SERIES



Will-Burt offers a wide variety of Portable Cellular and Mobile Elevation Solutions offering both short-term and long-term deployment options. Will-Burt mast and ITS towers assure optimal performance of mobile and cellular equipment by delivering elevation solutions with unsurpassed rigidity and stability.

Will-Burt's extensive line of masts and towers offer the ability to accommodate your unique requirements; whether it is a heavy payload, extremely harsh environment, off-road travel, remote location or an extended deployment period. A commercial-off-the-shelf (COTS) or custom solution will be available to meet your specifications. We offer field, trailer and truck solutions; portable tower systems, COWS and COLTS, to fulfill your long-term and temporary communication requirements.

All of our masts and tower elevation solutions are designed and manufactured to meet or exceed rigorous safety and operational requirements. You can be assured that a Will-Burt elevation solution will successfully meet your specifications and provide reliable and flawless service for years.

WILL-BURT ELEVATION SOLUTION ADVANTAGES

Will-Burt's portable telescopic masts and lattice towers enable your transmission equipment to perform at their highest capability and feature:

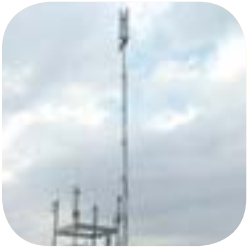
- **Greater stability and rigidity**
- **Fast deployment and retraction time**
- **Easy one person deployment**
- **Large payload capacity**
- **Long-term deployment capability**

INNOVATIVE CUSTOM SOLUTIONS

Will-Burt's specialized engineers can develop an elevation solution to meet your unique requirements.

Portable Cellular and Mobile Elevation Solutions

CONTENTS



**PNEUMATIC LOCKING
HD & SHD
TELESCOPING MASTS 4**



**COW SERIES –
TRAILER MOUNTED MAST 10**



**PNEUMATIC NON-LOCKING
TELESCOPING MAST 5**



**TMT SERIES –
TRUCK MOUNTED TOWER SYSTEM
..... 11**



**SR SERIES –
PORTABLE TOWER TRAILER 6**



**SC SERIES –
COMMUNICATION-SITE-ON-WHEELS
..... 12**



**NC/SR SERIES –
COMMUNICATION-SITE-ON-WHEELS
..... 7**



**CLT SERIES –
COMMUNICATION-SITE-
ON-LIGHT-TRUCK
..... 13**



**MT SERIES –
TRAILER MOUNTED MAST 8**



**PNEUMATIC LOCKING MAST
..... 14**



**IT SERIES –
PORTABLE TOWER TRAILER 9**



**PORTABLE MASTS –
EXPEDITION SERIES &
HURRY-UP MASTS 15**

PNEUMATIC LOCKING HD & SHD TELESCOPING MASTS



Designed for extended deployment periods.

Available in both Heavy Duty and Super Heavy Duty models, these masts offer a light weight elevation solution with a high payload capacity. These vehicle or trailer mounted telescoping masts feature locking collars that allow the mast to remain extended indefinitely without air pressure. Full-length keyways maintain directional azimuth and provide precise pointing accuracy. Standard models are available in heights from 30 ft. / 8.9 m to 134 ft. / 40.8 m with payload capabilities up to 450 lbs. / 205 kg.

- **Maintains Height Indefinitely**
Locking collars are easy to operate
- **Maintains Azimuth – Minimal Twist Deflection**
Full-length external keyways
- **Long Life with Low Maintenance**
Corrosion resistant aluminum and stainless steel with synthetic bearings



HEAVY DUTY LOCKING MASTS SPECIFICATIONS

Model	7-30	7-42	10-60	14.5-80	17-100	20-134
Payload Capacity	150 lbs. / 68 kg	150 lbs. / 68 kg	200 lbs. / 90 kg	225 lbs. / 102 kg	200 lbs. / 90 kg	150 lbs. / 68kg
Extended Height	29 ft. 1" / 8.9 m	41 ft. 3" / 12.6 m	59 ft. 9" / 18.3 m	79 ft. 9" / 24.3 m	99 ft. 9" / 30.4 m	133 ft. 9" / 40.8 m
Nested Height	7 ft. / 2.1 m	7 ft. 9" / 2.3 m	10 ft. 1" / 3 m	14 ft. 3" / 4.3 m	17 ft. 2" / 5.2 m	20 ft. 2" / 6.1 m
Approx. Mast Weight	125 lbs. / 57 kg	235 lbs. / 107 kg	330 lbs. / 150 kg	416 lbs. / 189 kg	480 lbs. / 218 kg	600 lbs. / 273 kg
Number of Sections	6	9	8	7	7	8
Tube Diameter	6.75-3" / 171-76 mm	9-3" / 229-76 mm	9-3.75" / 229-95 mm	9-4.5" / 229-114 mm	9-4.5" / 229-95 mm	9-3.75" / 229-95 mm
Collar Type	Locking T Handles	Locking T Handles	Locking T Handles	Locking T Handles	Locking Trip Lines	Locking Trip Lines
Guying Required	Not Required	Not Required	Not Required	4 way / 4 level	4 way / 4 level	4 way / 5 level
Max. Operating Pressure	35 PSIG (2.4 bar)	35 PSIG (2.4 bar)	35 PSIG (2.4 bar)	35 PSIG (2.4 bar)	35 PSIG (2.4 bar)	35 PSIG (2.4 bar)

SUPER HEAVY DUTY LOCKING MASTS SPECIFICATIONS

Model	9-50	10.3-60	10.8-76	15.7-100
Payload Capacity	450 lbs. / 205 kg	450 lbs. / 205 kg	200 lbs. / 91 kg	450 lbs. / 205 kg
Extended Height	50 ft. 5" / 15.3 m	60 ft. 6" / 18.4 m	76 ft. 2" / 23 m	100 ft. 5" / 30.3 m
Nested Height	9 ft. 2" / 2.8 m	10 ft. 5" / 3.18 m	10 ft. 9" / 3.3 m	15 ft. 8" / 4.8 m
Approx. Mast Weight	500 lbs. / 227 kg	500 lbs. / 227 kg	536 lbs. / 245 kg	790 lbs. / 361 kg
Number of Sections	8	8	10	8
Tube Diameter Range	11.25-5.25" / 288-135 mm	11.25-5.25" / 288-135 mm	11.25-3.75" / 288-96 mm	11.25-5.25" / 288-135 mm
Collar Type	Locking T Handles	Locking T Handles	Locking T Handles	Locking T Handles Trip Lines
Max. Operating Pressure	35 PSIG (2.4 bar)	35 PSIG (2.4 bar)	35 PSIG (2.4 bar)	35 PSIG (2.4 bar)

Dimensions provided are for reference only and are not intended for vehicle design purposes. Specifications subject to change without notice. Consult factory.

PNEUMATIC NON-LOCKING TELESCOPING MAST



Will-Burt's pneumatic non-locking telescoping masts are ideal for short-term deployment of transmission equipment required for testing and analysis, temporary increase in network traffic or outages. Capable of heights of 58 ft. / 17.7 m and payloads up to 200 lbs. / 90 kg, these lightweight and reliable masts provide precise directional azimuth and can be trailer or vehicle mounted.

- **Easy and Fast Deployment**
No guylines required
- **Maintains Azimuth – Minimal Twist Deflection**
Full-length external keyways
- **Long Life with Low Maintenance**
Corrosion resistant aluminum and stainless steel with synthetic bearings
- **Custom Models Can Be Designed and Manufactured for Unique Requirements. Consult Factory.**



STANDARD DUTY NON-LOCKING MASTS SPECIFICATIONS

Model	5-20	6-27	7-34	8-30
Payload Capacity	70 lbs. / 32 kg	40 lbs. / 18 kg	40 lbs. / 18 kg	100 lbs. / 45 kg
Extended Height	20 ft. / 6.1 m	26 ft. 10" / 8.2 m	33 ft. 10" / 10.3 m	29 ft. 10" / 9.1 m
Nested Height	5 ft. 4" / 1.6 m	6 ft. / 1.8 m	7 ft. / 2.1 m	8 ft. / 2.4 m
Approx. Mast Weight	45 lbs. / 21 kg	54 lbs. / 25 kg	67 lbs. / 31 kg	64 lbs. / 29 kg
Number of Sections	6	7	7	5
Tube Diameter	5-2.5" / 127-64 mm	5-2" / 127-51 mm	5-2" / 127-51 mm	5-3" / 127-76 mm
Collar Type	Non-Locking	Non-Locking	Non-Locking	Non-Locking
Max. Operating Pressure	20 PSIG (1.4 bar)	20 PSIG (1.4 bar)	20 PSIG (1.4 bar)	20 PSIG (1.4 bar)

HEAVY DUTY NON-LOCKING MASTS SPECIFICATIONS

Model	6-25	7-30	7-42	8.5-48	8.5-52	9.5-56	9-58
Payload Capacity	150 lbs. / 68 kg	150 lbs. / 68 kg	150 lbs. / 68 kg	200 lbs. / 90 kg	100 lbs. / 45 kg	200 lbs. / 90 kg	90 lbs. / 40 kg
Extended Height	25 ft. / 7.6 m	29 ft. 1" / 8.9 m	41 ft. 2" / 12.5 m	48 ft. / 14.6 m	52 ft. / 15.8 m	56 ft. 2" / 17 m	58 ft. / 17.7 m
Nested Height	5 ft. 10" / 1.8 m	6 ft. 8" / 2 m	7 ft. 1" / 2.1 m	8 ft. 6" / 2.6 m	8 ft. 4" / 2.5 m	9 ft. 6" / 2.9 m	9 ft. / 2.7 m
Approx. Weight	110 lbs. / 50 kg	125 lbs. / 57 kg	235 lbs. / 107 kg	275 lbs. / 125 kg	266 lbs. / 121 kg	296 lbs. / 135 kg	290 lbs. / 132 kg
Number of Sections	6	6	9	8	9	8	9
Tube Diameter	6.75-3" / 171-76 mm	6.75-3" / 171-76 mm	9-3" / 229-76 mm	9-3.75" / 229-95 mm	9-3" / 229-76 mm	9-3.75" / 229-95 mm	9-3" / 229-76 mm
Collar Type	Non-Locking	Non-Locking	Non-Locking	Non-Locking	Non-Locking	Non-Locking	Non-Locking
Max. Operating Pressure	35 PSIG (2.4 bar)	35 PSIG (2.4 bar)	35 PSIG (2.4 bar)	35 PSIG (2.4 bar)	35 PSIG (2.4 bar)	35 PSIG (2.4 bar)	35 PSIG (2.4 bar)

Dimensions provided are for reference only and are not intended for vehicle design purposes. Specifications subject to change without notice. Consult factory.

SR SERIES – PORTABLE TOWER TRAILER (Multiterrain Configuration)

The heavy-duty SR Series Portable Tower Trailer is ideal for use in multiple environments and terrains for ultimate deployment flexibility.

The most affordable and popular of all ITS configurations, the SR Series incorporates a 15,000 lb. / 6,804 kg capacity GVWR heavy-duty, multiterrain drawbar trailer with the industry's strongest, most reliable and capable telescopic tower system. The SR Series trailer uses tandem 7,000 lb. / 3,175 kg each capacity axles, 16" / 40 cm multiterrain tires, all-wheel electric brakes, a trailer breakaway device, LED lighting, outrigger stabilization, and an impact and weather-resistant coating over a diamond plate steel operating platform. The SR Series is designed to transport and support at site a trailer payload from 3,800 – 4,500 lbs. / 1,724 – 2,041 kg of ITS and/or customer-installed equipment.

The ITS lattice steel tower is designed to transport horizontally over the trailer's forward deck, automatically tilt by means of a single hydraulic cylinder and elevate using a custom direct drive electric motor/gearbox assembly. The SR Series is capable of being deployed, elevated to its full-extended height and secured by a mechanical tower lock mechanism by one person under 30 minutes.

- **Multienvironment Use and Unmatched Tower Capabilities**
All-terrain transport and deployment alternatives; features varying tower heights with substantial operational and survival wind-load characteristics
- **Ease of Operation**
User-friendly and reliable hydraulic tilt and electric direct drive operating systems, integrated safety and redundant cabling features
- **Model Characteristics and Product Availability**
Inventories of our most popular and affordable configuration are maintained at all times. Military standards are used as guides in equipment design and manufacturing processes

Payload Capacity	550 lbs. standard, greater capacities available
Trailer GVWR Capacity	15,000 lbs. / 6,804 kg
Tower Height	from 55 ft. to 106 ft. / 16.8 m to 32.3 m



NC/SR SERIES – COMMUNICATION-SITE-ON-WHEELS (COW)

The NC/SR Series COW features an extra heavy-duty multi-terrain trailer, light-weight equipment/personnel shelter and the industry's most capable and reliable telescopic lattice steel tower structure. Combined, this proven model series affords customers the benefit of a flexible design and rugged construction coupled with the most advanced and cost effective alternative for rapidly establishing new or restoring the flow of vital information from remote and urban areas of need.

The NC/SR Series COW is designed to transport the self-supporting and guy-capable tower horizontally over a climate controlled equipment/personnel shelter, hydraulically tilt to the vertical position and elevate to its full extension using a custom direct-drive electric motor and gearbox assembly. NC/SR trailer models feature extra heavy-duty drawbar, gooseneck, or 5th wheel style tow configurations with sufficient capacity to accommodate a variety of shelter sizes, tower elevations, power generation and other common and proprietary equipment. Trailers incorporate tandem 10,000 lb. / 4,536 kg or greater capacity axles, dual wheels with multiterrain tires, standard all-wheel electric or optional hydraulic/surge or air brake systems, a trailer breakaway device, LED lighting, outrigger stabilization with manual and/or automated leveling jacks, and an impact and weather-resistant coating over diamond and smooth plate steel operating platforms.

Each NC/SR tower model is capable of being deployed, raised to its full-extended height, and secured by a mechanical tower lock mechanism under 30 minutes. For added security and stability during poor weather conditions, excessive loading, long-term deployment, or to minimize structure deflection for critical applications, this self-supporting tower may be further protected by the use of an optional guy cable and ground anchor system.

The NC/SR Series accommodates lightweight steel equipment and personnel shelters with dimensions of 8'-16' (L) x 8' (W) x 8' (H) / 2.4 m–4.9 m (L) x 2.4 m (W) x 2.4 m (H). ITS climate controlled shelters are steel skid-integrated

structures that feature as standard, minimum 2-ton (24,000 BTU) HVAC, 100-200A load center with populated receptacles, manual or auto transfer switch, interior, exterior and emergency lighting, halo grounding system, entry/smoke/fire alarm terminal block, waveguide entry provisions, telco board, generator and shore power ports and detachable entry steps.

- **Flexible, Heavy-duty Trailer and Tower Design**

Allows for a variety of trailer configurations, shelter sizes, and tower elevations with substantial payload and wind-load capabilities

- **Ease of Operation**

User-friendly and reliable hydraulic tilt and electric direct drive operating systems, integrated safety and redundant cabling features

- **Model Customization**

Multiple trailer brake and tow configurations coupled with a variety of shelter and tower alternatives afford customers an opportunity to select from a variety of COTS and custom models best suited for their specific requirement

Payload Capacity	550 lbs. standard to 750 lbs. / 249 kg to 340 kg customized
Trailer GVWR Capacity	20,000 – 36,000 lbs. / 9,072 kg - 16,329 kg
Tower Height	from 55 ft. to 106 ft. / 16.8 m to 32.3 m - 130 ft. / 39.6 m customized
Standard Shelter Size	8'-16' L x 8' W x 8' H



MT SERIES – TRAILER MOUNTED MAST (Integrated Tilt Capabilities)

The ITS MT Series is ideal for deployment in virtually any location. A low profile and modular design affords this model the advantage of C-130 aircraft, flat-bed, or standard fleet-vehicle transport as well as fully assembled containerization.

The ITS MT Series Trailer Mounted Mast System features a self-supporting or guyed, locking or nonlocking pneumatic mast with an innovative tilt capability. The MT Series features an enclosed compressor for mast tilt, extension and retraction with additional space available for optional power generation and equipment enclosure. A heavy-duty steel constructed trailer comes standard with tandem axles, 16" / 40 cm multiterrain tires, all-wheel electric or optional hydraulic/surge brakes, a trailer breakaway device, outrigger stabilization, LED lighting, and an impact and weather-resistant coating over a diamond plate steel operating platform. The galvanized steel tilt support structure and pneumatic mast exoskeleton incorporates a safety climb system for secure and easy accesses to the mast's optional locking mechanisms and/or secondary mast control panel. Primary mast controls are secured in a trailer-level NEMA enclosure. With the use of integrated lifting provisions and/or fork pockets, the entire mast support structure may be easily removed from its trailer for integration atop an appropriate foundation, truck bed or skid.

- **Rugged and Versatile Design**

Allows for integration to a variety of mobile and stationary platforms; convenient shipping, transport and deployment alternatives

- **Ease of Operation**

User-friendly and reliable pneumatic operating system; integrated safety features

- **Model Customization**

Multiple designs afford customers a choice from a variety of COTS trailer payload and mast selection alternatives



Trailer GVWR Capacity	7,000 – 15,000 lbs. / 3,175 kg - 6,804 kg
Mast Height	Up to 60 ft. / 18.3 m - 100 ft. / 30.5 m customized

IT SERIES – PORTABLE TOWER TRAILER (Urban Configuration)

The extra-heavy-duty IT Series Portable Tower Trailer is ideal for urban deployments that require a larger and greater capacity trailer platform; ideal for full-height outdoor equipment cabinets.

The original ITS configuration, this IT Series incorporates an 18,000 lb. / 8,165 kg capacity GVWR extra-heavy-duty, drawbar (or optional gooseneck) trailer with the industry's strongest, most reliable and capable telescopic tower system. The IT Series trailer uses tandem 8,000 lb. / 3,629 kg each capacity axles, 16" / 40 cm heavy-duty tires, all-wheel electric brakes, a trailer break-away device, LED lighting, outrigger stabilization, and an impact and weather-resistant coating over a diamond plate steel operating platform. The IT Series is designed for primary road transport with a payload capacity capable of supporting to 6,000 lbs. / 2,722 kg of ITS and/or customer-installed equipment.

The ITS lattice steel tower is designed to transport horizontally over the trailer's forward deck, automatically tilt by means of a single hydraulic cylinder and elevate using a custom direct drive electric motor/gearbox assembly. The IT Series is capable of being deployed, elevated to its full extended height and secured by a mechanical tower lock mechanism by one person under 30 minutes.

- **Multiple models available to fit any need**

Self-supporting and guy capable elevations from 55' - 106' / 16.7 m - 32 m

- **Urban Use and Unmatched Tower Capabilities**

Ideal for primary road transport and urban deployment alternatives; features varying tower height alternatives with substantial operational and survival wind-load characteristics

- **Ease of Operation**

User-friendly and reliable hydraulic tilt and electric direct drive operating systems, integrated safety and redundant cabling features

- **Model Characteristics and Trailer Payload Capabilities**

A large and extra-heavy-duty trailer platform design affords customers a variety of installation alternatives; significant space and capacity to accommodate outdoor enclosures, power generation and storage

Payload Capacity	550 lbs. standard to 750 lbs. / 249 kg to 340 kg customized, greater capacities available
GVWR Capacity	18,000 lbs. / 8,165
Tower Height	from 55 ft. to 106 ft. / 16.8 m to 32.3 m - 130 ft. / 39.6 m



COW SERIES – TRAILER MOUNTED MAST (Vertical Mast Installation)

This versatile ITS COW Series is designed to accommodate single or tandem vertically mounted masts and may include either a fully equipped and environmentally controlled equipment/personnel shelter or multiple outdoor cabinets. Secured to a rugged drawbar, gooseneck of 5th wheel designed trailer, this model series offers the ultimate in payload elevation solutions.

The ITS COW Series Trailer-mounted Mast features up to two self-supporting or guyed, locking or nonlocking pneumatic masts with a convenient elevated payload installation and secondary mast operating platform. Mast and compressor operations are managed from a primary control panel secured in a NEMA enclosure conveniently located above the trailer platform. Considerable space is available on a heavy-duty steel constructed trailer to accommodate an optional power generator, auxiliary fuel tank, and additional storage.

The trailer features tandem 7,000 lb. / 3,175 kg capacity or larger axles, 16" / 40 cm multiterrain tires, standard all-wheel electric or optional hydraulic/surge or air brakes, a trailer breakaway device, LED lighting, outrigger stabilization with manual and/or automated leveling jacks, and an impact and weather-resistant coating over a diamond plate steel operating platform. The elevated mast-top access and operating platform also features this heavy-duty, nonslip coating.

The ITS COW Series accommodates lightweight steel equipment and personnel shelters with dimensions of 8'-12' (L) x 8' (W) x 8' (H) / 2.4 m–3.6 m (L) x 2.4 m (W) x 2.4 m (H). ITS climate controlled shelters are steel skid-integrated structures that feature as standard, minimum 2-ton

(24,000 BTU) HVAC, 100-200A load center with populated receptacles, manual or auto transfer switch, interior, exterior and emergency lighting, halo grounding system, entry/smoke /fire alarm terminal block, waveguide entry provisions, telco board, generator and shore power ports and detachable entry steps.

- **Flexible Design**

Allows for a variety of trailer configurations, shelter sizes, and single or tandem mast alternatives

- **Ease of Operation**

User-friendly and reliable pneumatic operating system, integrated safety and security features

- **Model Customization**

Multiple trailer brake and tow configurations coupled with a variety of shelter, cabinet and mast alternatives afford customers an opportunity to select from a variety of COTS or custom models best suited for their specific requirement

Trailer GVWR Capacity	7,000 / 3,175 kg – 22,000 lbs. / 9,979 kg
Mast Height	from 60 ft. / 18.3 m to 76 ft. / 23.2 m customized
Standard Shelter Sizes	8'-12' L x 8' W x 8' H



TMT SERIES – TRUCK MOUNTED TOWER SYSTEM

The TMT Series offers the ultimate flexibility in rapid deployment alternatives for the extreme duty ITS telescopic tower system.

The TMT Series designates a 19,500–33,000 lb. / 8,845–14,969 kg capacity GVWR truck and integrated tower system designed to transport and support at site a truck bed payload of up to +6,000 lbs. / 2,721 kg of ITS and/or customer-supplied equipment. A custom ITS truck bed with outrigger stabilization and optional auto-leveling, transports and supports a heavy-duty ITS tower to standard elevations from 42' to 130' / 12.8 m to 40 m above ground level (AGL). This multisection lattice steel telescopic structure is designed to transport horizontally over the truck's cab and automatically tilt by means of a heavy-duty, chrome-plated hydraulic cylinder. The tower system is raised to its full extension using a direct drive, totally enclosed fan cooled (TEFC), wash-down rated electric motor and gearbox assembly.

This TMT Series Truck-mounted Tower System is capable of being deployed, elevated to its full extended height, and secured by a mechanical tower lock mechanism by one person under 30 minutes.

• Model Customization – Heavy-duty Truck Bed and Tower Design

allows this rapid response vehicle the benefit of full customization to meet a multitude of common and proprietary needs

- 2x4 or 4x4 truck integration with a variety of chassis length and payload alternatives
- Heavy-duty outrigger stabilization with optional auto-leveling capability
- Flexible storage containment, climate controlled equipment enclosure and power generation alternatives
- Seamless integration of the industry's most recognized, reliable and capable telescopic tower system



Payload Capacity	550 lbs. standard to 750 lbs. / 249 kg to 340 kg customized, greater capacities available
Truck GVWR Capacity	19,500 – 33,000 lbs. / 8,845 kg - 14,969 kg
Tower Height	from 42' to 110' AGL

SC SERIES – COMMUNICATION-SITE-ON-WHEELS (COW)

The SC Series COW features an extra-heavy-duty trailer, full-size equipment/personnel shelter and the industry's most capable and reliable telescopic lattice steel tower structure. Together, this model series offers a complete solution to fulfill customers' portable communication needs.

The SC Series incorporates an extra-heavy-duty drawbar, gooseneck, or 5th wheel trailer tow design with sufficient capacity to support a shelter to 20' (L) / 6 m (L) and 9'6" (H) / 2.9 m (H), tower elevation to 130' / 40 m AGL and a variety of power generation, fuel containment and storage alternatives.

ITS self-supporting and guy-capable telescopic tower tilts to the vertical position using an advanced hydraulic system and elevates to its full extension by means of a custom direct-drive electric motor and gearbox assembly. SC Series trailers incorporate tandem 12,000 lb. / 5,443 kg or greater capacity axles, dual wheels, standard all-wheel electric or optional hydraulic/surge or air brake systems, a trailer breakaway device, LED lighting, outrigger stabilization with manual and/or automated leveling jacks, and an impact and weather-resistant coating over diamond and smooth plate steel operating platforms.

Each SC tower model is capable of being deployed, raised to its full height and secured by a mechanical tower lock mechanism under 30 minutes. For added security and stability during poor weather conditions, excessive loading, long-term deployment, or to minimize structure deflection for critical applications, this self-supporting tower may be further protected by the use of an optional guy cable and ground anchor system.

The SC Series accommodates lightweight steel equipment and personnel shelters with dimensions of 8'-20' (L) x 8' (W) x 9'6" (H) / 2.4 m-6 m (L) x 2.4 m (W) x 2.9 m (H). ITS climate controlled shelters are steel skid-integrated structures that feature as standard, minimum (2) 2-ton each (48,000 BTU) HVAC, 200A load center with populated receptacles, manual or auto transfer switch, interior, exterior and emergency lighting, halo grounding system, entry/smoke/fire alarm terminal block, waveguide entry provisions, telco board, generator and shore power ports and detachable entry steps.

- **Flexible, Heavy-duty Trailer and Tower Design**

Allows for a variety of trailer configurations, full-size shelters, and tower elevations with substantial payload and wind-load capabilities

- **Ease of Operation**

User-friendly and reliable hydraulic tilt and electric direct drive operating systems, integrated safety and redundant cabling features

- **Model Customization**

Multiple trailer brake and tow configurations coupled with a variety of shelter and tower alternatives afford customers an opportunity to select from a variety of COTS and custom models best suited for their specific requirements

Payload Capacity	550 lbs. standard to 750 lbs. / 249 kg to 340 kg customized, greater capacities available
Trailer GVWR Capacity	24,000 – 60,000 lbs. / 10,886 kg - 27,215 kg
Tower Height	from 55 ft. to 106 ft. / 16.8 m to 32.3 m - 130 ft. / 39.6 m
Shelter Size	8'-20' L x 8' W x 9'6" H



CLT SERIES – COMMUNICATION-SITE-ON-LIGHT-TRUCK (COLT)

The CLT Series Communication-Site-on-Light Truck (COLT) is a completely integrated solution that can be deployed almost anywhere. The CLT is designed to accommodate single or tandem vertically mounted pneumatic masts, a fully equipped communications equipment shelter, power generation, and a mast access platform integrated atop a heavy-duty truck chassis.

The CLT Series is custom designed and accessorized by ITS according to individual customer specifications. The model series designates a standard 29,000 – 36,000 lb. / 13,154 – 16,329 kg capacity GVWR truck that incorporates a rugged equipment and personnel shelter having typical dimensions to 16' (L) x 8' (W) x 9'6" (H) / 4.9 m (L) x 2.4 m (W) x 2.9 m (H). ITS climate controlled shelters are steel skid-integrated structures that feature as standard, minimum (2) 2-ton each (48,000 BTU) HVAC, 200A load center with populated receptacles, manual or auto transfer switch, interior, exterior and emergency lighting, halo grounding system, entry/smoke/fire alarm terminal block, waveguide entry provisions, telco board, generator and shore power ports and detachable entry steps.

A single or tandem heavy-duty mast system features self-supporting or guyed, locking or nonlocking pneumatic mast(s) secured to the shelter and plumbed to an integrated air supply system. A convenient payload installation and optional secondary mast operating platform allows for safe deployment by a single operator.

- **Flexible Design**

Allows for a variety of truck configurations, shelter sizes, and single or tandem mast alternatives

- **Ease of Operation**

User-friendly and reliable pneumatic operating system, integrated safety and security features

- **Model Customization**

Multiple truck chassis lengths, payload capacities and braking systems coupled with a variety of shelter and pneumatic mast alternatives afford customers an opportunity to select from a variety of typical or custom model configurations



Payload Capacity	550 lbs. standard to 750 lbs. / 249 kg to 340 kg customized, greater capacities available
Truck GVWR Capacity	29,000 – 36,000 lbs.
Mast Height	from 60 ft. / 18.3 m to 76 ft. / 23.2 m customized
Shelter Size	8'-16' L x 8' W x 9'6" H

PNEUMATIC LOCKING MAST

The Will-Burt Pneumatic Locking Mast is a reliable and proven solution for circumstances that call for short, medium and extended deployment periods.

The family of Pneumatic Locking Masts provides lightweight and stable solutions for situations that call for indefinite payload deployment. Each mast section locks, which eliminates the need to rely on air pressure to maintain consistent payload height. The mast sections are constructed of high strength heat-treated aluminum with two full length external keys that maintain directional azimuth. The high pointing accuracy of the Will-Burt Pneumatic Locking Masts ensures that repositioning of the mast will not be required.

These masts can be mounted on vehicles or trailers. Typically guy lines are not required for vehicle mounted masts under

60 ft. and field guys are used for heights over 60 ft.

All Pneumatic Locking Masts have these features:

- **Full-length External Keys**
Maintain directional azimuth
- **Locking Collars**
Permit indefinite mast extension
- **Low Nested Height**
Allows vertical installation on vehicles and trailers

	Weight	Height
Heavy-duty	up to 225 lbs. / 102 kg	up to 134 ft. / 40.8 m
Super-heavy-duty	up to 450 lbs. / 204 kg	up to 100 ft. 30.5 m



PORTABLE MASTS

EXPEDITION SERIES MAST

Will-Burt's Expedition Series mast delivers the ultimate in true portability. It is the lightest, most stable, single-man portable field mast in the world. Transportable in a compact carrying bag, the Expedition Series mast can be set up by a single individual. Available in multiple height configurations up to 60 ft. / 18.3 m with 40 lb. / 18 kg payload, the versatility and transportability of the Expedition Series mast makes it a favorite for quick antenna elevation. This mast may also be shelter-mounted.

- **Composite Tripod**
 - High stability
 - Easy to operate friction locks
 - MIL-Qualified
- **Ergonomic Tube Lifter**
 - Aids in lifting tube sections with heavier payloads
- **Man Portable**
 - All components pack into one wheeled transport bag
 - Easily carried and transported by one or two persons
 - Ergonomically balanced and double stitched bag



HURRY-UP MAST

The Hurry-Up mast is ideal for fast deployment of lightweight antennas and equipment. This mast can be extended to a full height of 25 ft. / 7.6 m in one minute or less and easily manages payloads up to 20 lbs. / 9 kg. The Hurry-Up mast features quick lock/release collars to extend the mast manually by pushing up the sections and fixing them into position. The Hurry-Up mast is well suited for field testing. Optional Drive-On plate allows the mast to be secured by simply driving a vehicle onto the plate.

- **Maintains Azimuth**
 - Locking collars and rigid design
 - No guylines required
- **Easy to Set Up**
 - Less than one minute
- **Corrosion Resistant**
 - Black anodized finish



CONTACT YOUR SALES REPRESENTATIVE TODAY

The Will-Burt Company, located in Orrville, Ohio, is the world's premier manufacturer of telescoping mast and tower elevation solutions - the world's one stop shop offering virtually every payload elevation solution from one source - for military, fire, cellular broadcast, entertainment and other applications. Will-Burt also designs and manufactures military and other shelters made of all-composite materials that deliver higher performance at lower life cycle cost than metal or partial composite shelters. Intrusion and Access Control Solutions are offered under Will-Burt's LINX™ brand. Will-Burt is employee owned and has a strong commitment to the continuous improvement process set forth by its ISO 9001:2008 certified quality system.



UNITED STATES

WORLD HEADQUARTERS

169 S. Main St., Orrville, Ohio USA 44667
Telephone: 330.682.7015
Mast Customer Service: 330.684.4000
Fax: 330.684.1190
Email: contact_us@willburt.com

INTEGRATED TOWER SYSTEMS

2703 Dawson Road, Tulsa, OK 74110
Telephone: 800.850.8535
Fax: 918.749.8537
Email: programs@itstowers.com

EUROPE

GEROH

A Will-Burt Company
Fischergasse 25
91344 Waischenfeld, Germany
Phone: +49-9202-18-0
Email: info@geroh.com

UNITED KINGDOM

UK SALES OFFICE

Windmill Hill Business Park
Whitehill Way
Swindon SN5 6QR
Telephone:
+44 (0) 1793 441 475

ASIA

SINGAPORE SALES OFFICE

1 Fullerton Road,
#02-01 One Fullerton,
Singapore 049213
Telephone: +65 6832 5689
Fax: +65 6722 0664